

⚡ According to CH1 setting, normal ODU can be connected to CH1.
 (Flexible wiring design with 2 ports)
 ⚡ Appropriate P1485 should be used according to PDB (Product Data Book).
 ⚡ For details, refer to the product PDB or manual.

AC Smart 5

PACSSA000

10-inch touch screen with HTML5 GUI (Graphic User Interface) for easy control.

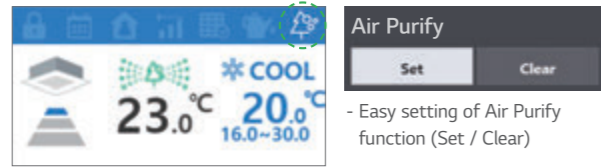
| MODEL NAME | PACSSA000 |
|--|--|
| Size (W x H x D, mm) | 253.2 x 167.7 x 28.9 |
| Interfaceable Products | MULTI V / ERV / ERV DX / Hydro kit / THERMA V / AHU Kit / LG Chiller ¹⁾ / Commercial Air Purifier |
| Maximum number of units | 128 |
| Individual / Group Control | On & Off / Mode / Temperature / Fan speed |
| Individual Controller Lock | Temperature / Mode / Fan speed / All |
| Advanced Function Setting and Display ²⁾ | Comfort Cooling / ODU Low Noise / ODU Defrost Mode / Comfort Level display / CO2 Level display (for ERV / ERV DX) / Night Time Free Cooling (for ERV / ERV DX) |
| Error Check | ○ |
| Slave Mode (Interlocking with higher level controller) | ○ |
| Schedule | Weekly / Monthly / Yearly / Exception day |
| Web Access | ○ |
| Emergency Stop & Alarm Display | ○ |
| Power Consumption Monitoring (with PDI) | ○ |
| Auto Changeover / Setback | ○ |
| Temperature Limit | ○ |
| Operation Time Limit | ○ |
| Visual Navigation | ○ |
| Operation Trend | ○ |
| Air Purify Control | ○ |
| Air Quality Level | ○ |
| Interlock Control | ○ |
| Virtual Group Control | ○ |
| ODU Capacity Control | ○ |
| Energy Navigation (with PDI) | ○ |
| Daylight Saving Time | ○ |
| External IO Port | DI 2 / DO 2 |
| BMS Integration ³⁾ | BACnet IP / Modbus TCP |
| IPv6 Support | ○ |

※ ○ : Applied, - : Not Applied
 1) Chiller Option Kit (PCHLLN000) is required.
 2) It is only available in some products.
 3) For the detail point list, please refer to the installation manual.

AC Smart 5

Air Purify Total Solution

Air Purify Control

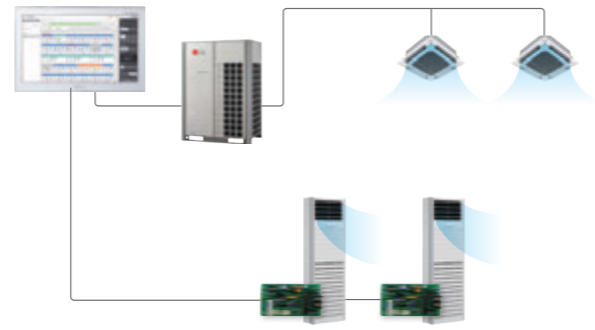


Air Quality Level Monitoring



System Air Conditioner

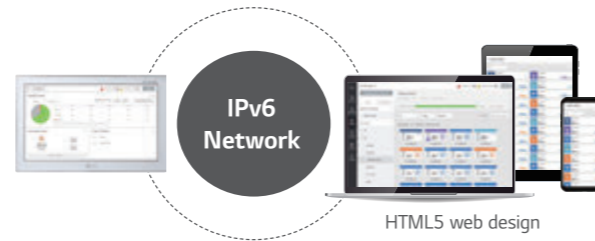
Commercial Air Purifier



* The Commercial Air purifier must additionally install PI485(PHNFP14A0).

Advanced Network Accessibility

AC Smart 5 reflects the state of the art of network technology trend. IPv6 (Internet Protocol version 6), which is the most recent version of the Internet Protocol provides accessibility to the IPv6 compatible network environment. In addition, HTML5 allows you to easily control LG HVAC system on a variety of platforms (PC, Mobile, Tablet), at any time and from any location, not just on the touch screen.



Visualized Control

Visual navigation enables controlling and monitoring the unit on floor, plan view for the intuitive management.



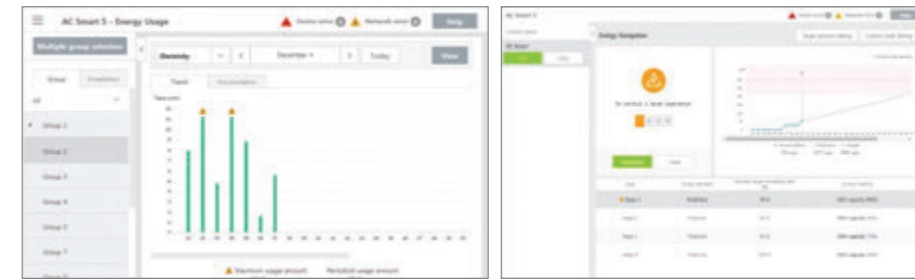
Multi Level Group Composition

User can make frequent and multi level group to control and monitor the device easily.



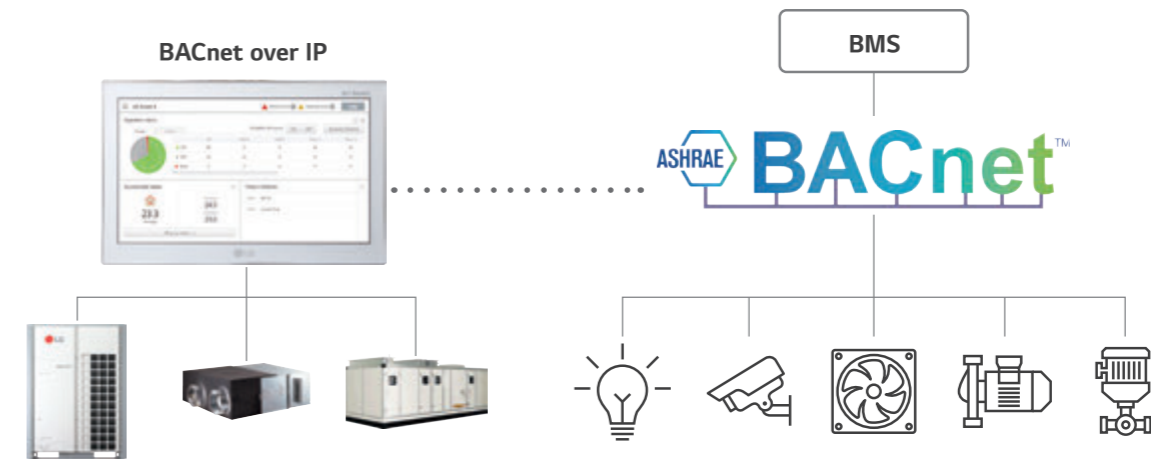
Energy Management

The energy navigation function allows the air conditioner's operational energy usage to be managed monthly, weekly and yearly. By analyzing present energy consumption and comparing with the plan, overuse of system operational costs can be prevented.



Building Management System (BMS) Integration

Without additional device, AC Smart 5 provides BACnet IP & Modbus TCP interface for BMS integration as well as its own management function.



Interlocking with 3rd Party Equipment

AC Smart 5 can make operation scenario with 3rd party equipment by ACS IO Module. Control coverage is expanded. (Air conditioner only → Sensors, Fans, Pumps, Switches...)

